

One thing begets another
 Despard Gallery, Castray Esplanade,
 Salamanca
 Until September 9
 Price range: \$295-\$7300

DUAL artists Jacob Leary and Jamin are presenting in their distinctive ways works of a satisfying contemporary nature.

The sense of their exhibition being double does not suggest there is a repetition of style or form, but rather that the pieces the two young men individually have created complement each other.

Their examples of artistry might compete for your attention, but that is not necessarily a negative.

If the dual show is also a duel, it is a highly civilised engagement between two individuals, but in this case without the ritual of rules.

Instead of pistols at 20 paces from another era, the weapons are drawn from the armoury of today's technology.

Leary's main body of work shows his continuing development of the strange cartographical landscape that is reproduced as large giclée prints.

“If the dual show is also a duel, it is a highly civilised engagement between two individuals, but in this case without the ritual of rules”

Just like seeing Earth from satellite imagery or alternatively zooming in closer to study a country or region, one can survey broadly or focus on details.

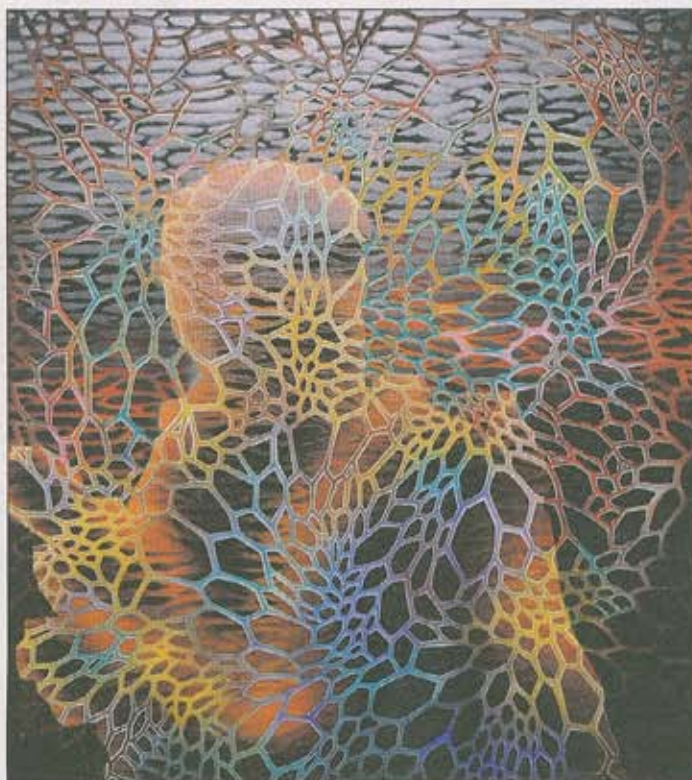
There are elaborate patterns to be decoded. Somewhat in the style of the famous Rorschach inkblot test, images can be perceived according to one's subjective psychological factors.

A superficial glance at *Every Second Divides Time* reveals a neat, winding border of succulents containing a complexity of irregular shapes and disparate objects. Closer scrutiny reveals benign flowers, fruit and insects, but there are also axes, guns and bullets.

Is this the dark side of suburbia being contained or masked behind a well-tended garden?

Leary also provides painted geometric abstractions which interlock irregularly but in a logically faceted manner, along with three-dimensional boxed installations with interrelationships of dissimilar objects.

Jamin, known for pixelated portraits, has in parallel been developing a series of impressive framed works that are pivotal on



ABSTRACT COLOUR: Above, *Concealing Reveals Something* by Jamin at Despard Gallery; right, Jacob Leary's *Every Second Divides Time*, also at Despard Gallery; below Josh Andree's *Sunset on Mt Wellington*.

patterns. With their layers of synthetic paint they can be admired at a medium distance or viewed closely to analyse the complicated stencilled surfaces behind the see-through shield.

Camouflage is meant to conceal and cause something to blend unobtrusively into an environment, yet some of Jamin's radiate colour that is quite lustrous.

With their branching, meshing and cellular structures, they have the appearance of exotic organisms or maybe the carapaces of tiny creatures observed through a microscope.

Leary and Jamin are non-traditional artists who have embraced the technology and materials of today and yet keep a hold on aesthetics. Both provide proof of intelligent innovation and the quest for challenging new avenues of artistry.



BACK TO NATURE:
The Collector by
 Diane Scarlett,
 showing at
 Long Gallery.

In Search of the Marvellous

PAT BRASSINGTON

EXHIBITION: 31 AUGUST – 6 OCTOBER 2013

WWW.CASTGALLERY.ORG

