

MARK OGGE

CIRCUS

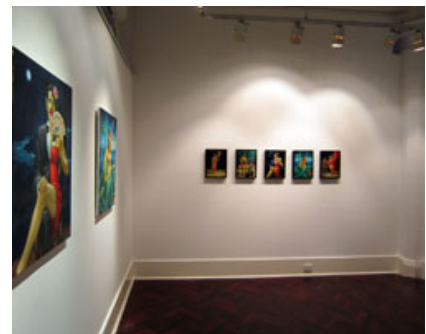
19 March - 13 April 2013

For centuries, even millennia, travelling fairs and circuses have roamed the world and become part of our collective imagination. They are places that appear and disappear. Loaded with symbolism and metaphor, they bring with them wondrous encounters with the mysterious. The strong man, the half man-half woman, Pierrot and acrobat are iconic characters loaded with psychological and symbolic meaning.

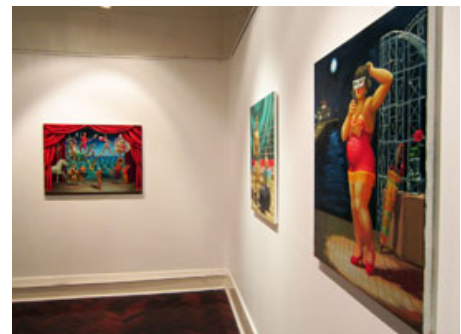
Throughout his career, Mark Ogge has used this iconography to create a rich imaginative landscape. Much of this has been with large commissions, including his work for international Spiegel tents around the world and Luna park in Melbourne. This exhibition brings together this imagery on a more intimate scale with beautifully executed studies of iconic fairground imagery and their characters, full of symbolism, humour, & melancholy.



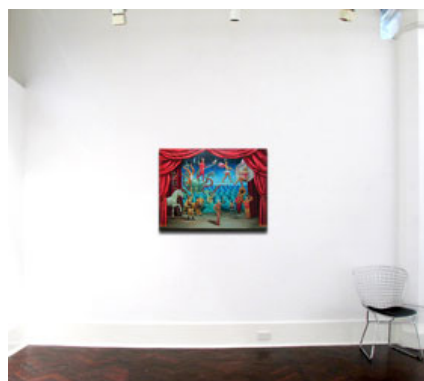
Exhibition installation



Exhibition installation



Troupe 2013
 oil on linen
 76 x 102cm



In situ on 3.7m wall



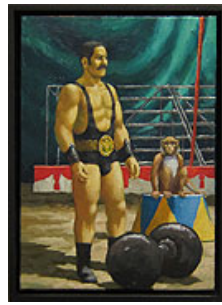
Half Man-Half Woman 2013
oil on linen
30 x 25cm



Mermaid 2013
oil on linen
30 x 25cm



Sideshow 2013
oil on linen
30 x 25cm



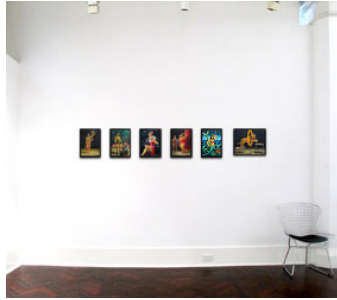
Strong Man and Monkey 2013
oil on linen
30 x 25cm



Snake Charmer 2013
oil on linen
35 x 25cm



Firehoop 2013
oil on linen
33 x 40cm



In situ on 3.7m wall



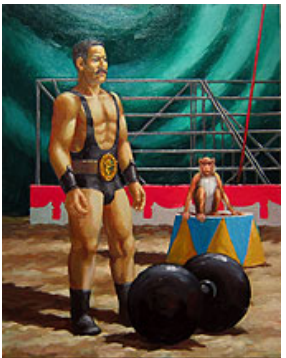
Half Man-Half Woman 2013
oil on linen
76 x 61cm



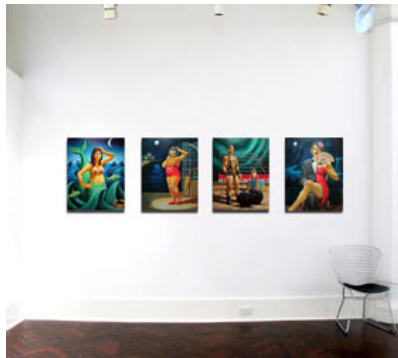
Mermaid 2013
oil on linen
76 x 61cm



Showgirl 2013
oil on linen
76 x 61cm



Strong Man, Girl and Lion 2013
oil on linen
76 x 61cm



In situ on 3.7m wall