

PETER JAMES SMITH

LIGHT

7 - 25 June 2011

The works in LIGHT are grounded in a nineteenth century landscape oil painting tradition of ethereal sunlit skies and dark foregrounds. Smith's use of mark-making continues his recent practice with overlaid texts in white oil paint on the canvas surface. These texts - of mathematical, religious, scientific, astronomical, poetic and historical observations - invoke a sense of longing, and gather echoes of the past, mine the passage of history, bringing it forward to the currency of the lived moment. Handwritten citations, truncated notes, ambiguous traces, scientific diagrams and blackboard erasures float on the loosely painted surfaces of stretched linen, collage and, more recently, found objects including gold-framed historical nineteenth century paintings and ceramics. The objects are chosen, indeed collected, so as to be carriers of an authentic history. By the act of writing and painting on such objects, Smith is essentially saying: Here are these things that I bring to you. As John Armstrong has written, 'it takes up the personalising process of an endearment written in a book given as a gift'.



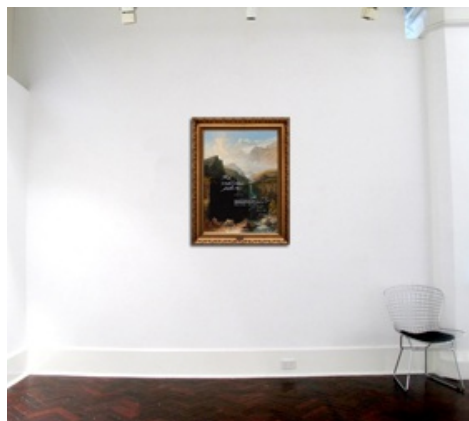
Light at the Crossing, 2011
 Oil on canvas
 91 x 121 cm



artwork in-situ on 3.7m gallery wall



The Sublime Echo, 2010
 Oil and enamel on 1843
 canvas by James Baker Pyne
 90 x 65cm



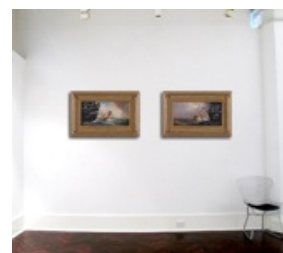
artwork in-situ on 3.7m gallery wall



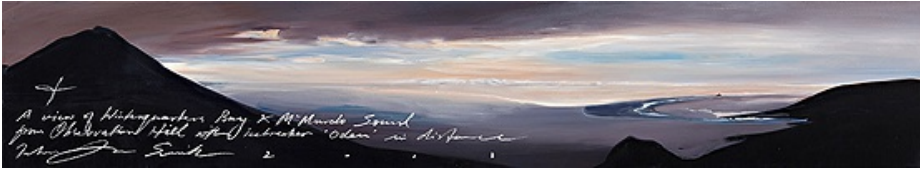
Rime of the Ancient Mariner, 2011
 Oil and enamel on 1879 canvas
 by G. Hayes (British)
 29 x 60cm



At Length Did Cross an Albatross, 2011
 Oil and enamel on 1879 canvas
 by G. Hayes (British)
 29 x 60cm



artwork in-situ on 3.7m gallery wall



A View of Winterquarters Bay, 2011
Oil on canvas
31 x 166 cm



Terra Nova, Beyond the Pressure Ridges of the Ross Ice Shelf, 1911, 2011
oil on linen
30 x 122 cm



artwork in-situ on 3.7m gallery wall



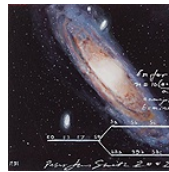
artwork in-situ on 3.7m gallery wall



Voice of the Hidden Waterfall, 2011
Oil and enamel on canvas
40 x 61 cm



Kepler's Second Law, 2011
Oil and enamel on canvas
40 x 61 cm



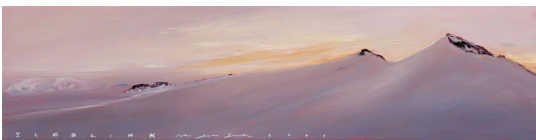
M31, 2011
oil and enamel on canvas
31 x 31 cm



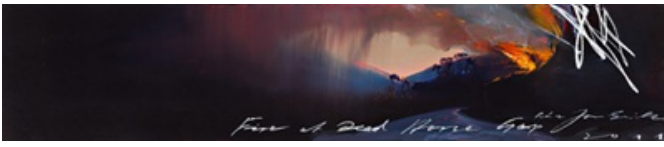
The Poet's Ashes, 2011
Oil and enamel on canvas
40 x 61 cm



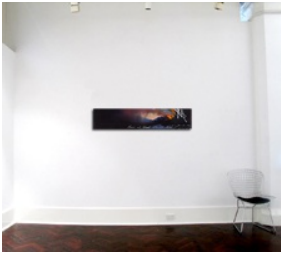
Crevasse at Windless Bight, 2011
Oil and enamel on canvas
40 x 61 cm



Iceblink, 2011
Oil on canvas
20 x 80cm



Fire at Dead Horse Gap, 2011
Oil on canvas
25 x 121 cm



artwork in-situ on 3.7m gallery wall



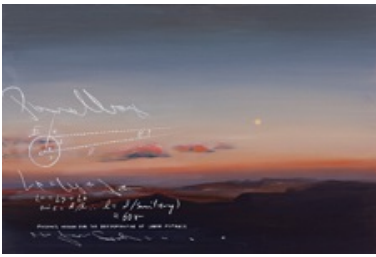
Light, 2011
Oil and enamel on 10 open books
Dimensions variable



Blue the Vault of Heaven, II, 2011
Oil and enamel, Jasperware Wedgwood on black shelf
Dimensions variable



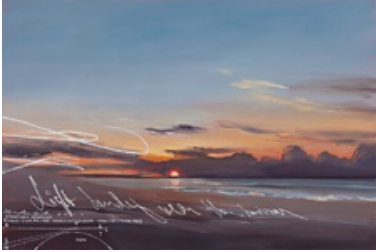
Span of History 2010
c-type print edition of 10 (currently 4 available)
58 x 124 cm



Parallax, 2011
Oil on canvas
61 x 91 cm



artwork in-situ on 3.7m gallery wall



Light Bending Near the Horizon, 2011
Oil on canvas
61 x 91 cm



artwork in-situ on 3.7m gallery wall



Golden Rules, 2011
Oil on timber ruler
collage
46 x 35 cm



Icon Regilded I,
2011
oil on 19thC Icon
31.5 x 25.5cm



Icon Regilded II,
2011
oil on 19thC Icon
22.5 x 17.5cm

