



FLINDERSLANEGALLERY

137 FLINDERS LANE MELBOURNE 3000
TUES-FRI 11AM TO 6PM, SAT 11AM TO 5PM
+ 61 3 9654 3332 INFO@FLG.COM.AU
Exceptional & collectable art since 1989

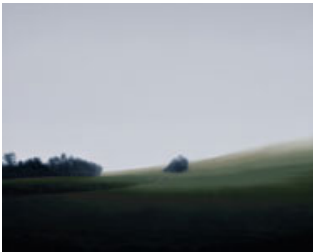
WILLIAM BREEN **NEW WORKS**

28 September - 16 October 2010

William Breen's latest series of works take us on a languid road trip through the rolling landscape of the Yarra Valley. As deep skies brood with the promise of rain, horizon lines fade away to present us with a birds eye view of the valley's verdant winter colours. Best characterized by his use of soft focus and subtle veneration, Breen's landscapes are testament to his skills of observation and spatial rendering. Cool and quiet they seduce the viewer with their classical composition and are imbued with a quality of meditative contemplation. They enable us to enter into them, permit the mind to clear and evoke the sensation of breathing in crisp, country air.

The images echo a state of suspended animation, when everything slows down to a point where one can appreciate the contemplative nature of a world in balance, a world where everything is in its right place: an ideal vision. Although each painting is an intuitive "moment of clarity", there is also a nostalgic quality, a half remembered past. The scenes are suspended in time and space in an emotive architectural landscape. Bathed in a diffused atmospheric light, the meditative nature of the urban image transcends the banal or familiar, into something sublime.

William Breen



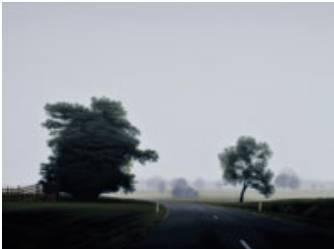
Uplands Road 2010
oil on linen
82 x 102cm



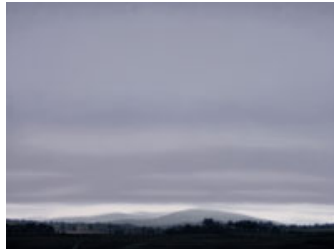
Magnolia Way 2010
oil on linen
82 x 102cm



Steels Creek 2010
oil on linen
76 x 102cm



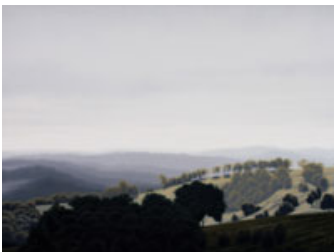
Gulf Road 2010
oil on linen
76 x 102cm



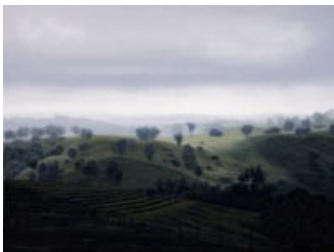
Sugarloaf 2010
oil on linen
76 x 102cm



Sullivan Bay 2010
oil on linen
76 x 102cm



Ridge Road 2010
oil on linen
76 x 102cm



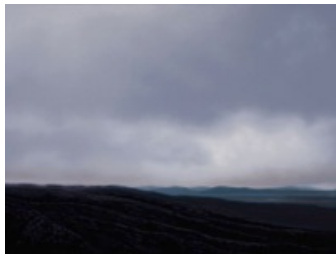
Simpson Road 2010
oil on linen
76 x 102cm



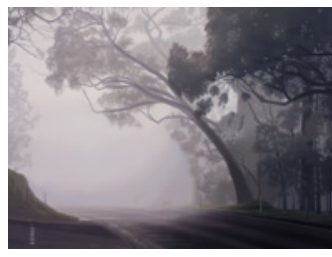
Skyline Road 2010
oil on linen
76 x 102cm



Garden Hill 2010
oil on linen
76 x 102cm



Reed Lookout 2010
oil on linen
76 x 102cm



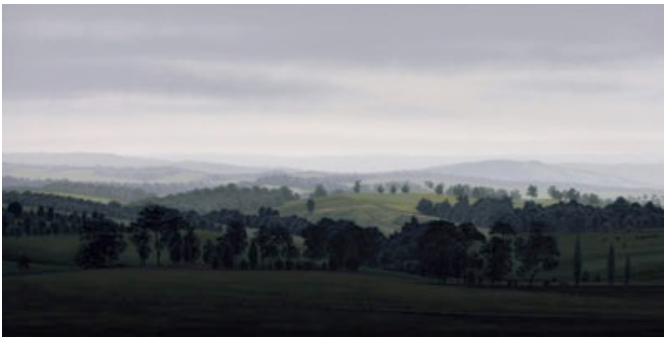
Breakneck Road 2010
oil on linen
76 x 102cm



Napoleon Hill 2010
oil on linen
102 x 138cm



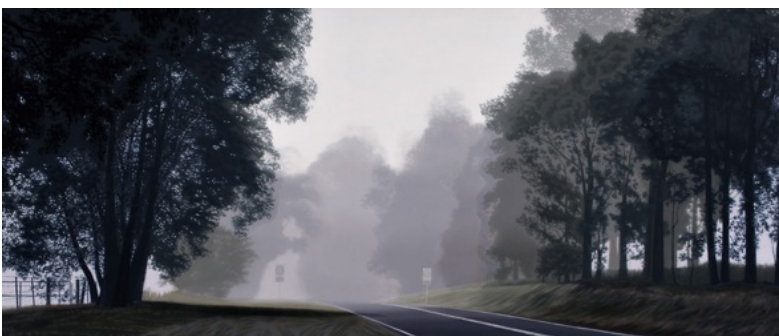
Picnic Road 2010
oil on linen
102 x 138cm



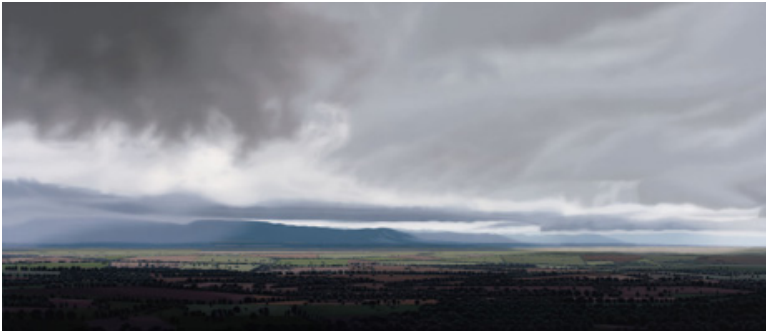
Kangaroo Ground 2010
oil on linen
92 x 183cm



Panton Hill 2010
oil on linen
92 x 214cm



Christmas Hills 2010
oil on linen
92 x 214cm



Pioneer Lookout 2010
oil on linen
92 x 214cm



Yarra Glen Road 2010
oil on linen
66 x 168cm

Installation views



THE AGE 15
 TUESDAY, SEPTEMBER 20, 2011

THEARTS

PAINTING

The road trip gets broadly and languid in New Landscapes, William Brown's oil on linen portraits of the rolling hills of the York Valley region and the drama of the Grampians. The skies are grey and moody, while the soft focus of the scenes creates a feeling of peaceful meditation. There is quietness on this road trip, with time to contemplate the passing landscapes.

Flinders Lane Gallery, 1 Lam-Ron, 137 Flinders Lane Melbourne. Phone: 9654 2152. \$5,000-10k

ANNIE STEVENS, BRIAN BAUMFORTH



16
 MONDAY, OCTOBER 9, 2011

Around the galleries Dan Rule



WHAT It's a road trip, but it's not the one you think it is. It's a road trip through the art world, with a focus on the landscape. The artist, Dan Rule, has been painting landscapes for over 20 years. His work is characterized by its soft focus and moody atmosphere. He has exhibited his work in several galleries, including the Flinders Lane Gallery in Melbourne. His paintings are a beautiful representation of the natural world, capturing the essence of the landscape in a way that is both serene and powerful.

WHERE Flinders Lane Gallery, 1 Lam-Ron, 137 Flinders Lane Melbourne. Phone: 9654 2152. \$5,000-10k

WHY The road trip gets broadly and languid in New Landscapes, William Brown's oil on linen portraits of the rolling hills of the York Valley region and the drama of the Grampians. The skies are grey and moody, while the soft focus of the scenes creates a feeling of peaceful meditation. There is quietness on this road trip, with time to contemplate the passing landscapes.

HOW The road trip gets broadly and languid in New Landscapes, William Brown's oil on linen portraits of the rolling hills of the York Valley region and the drama of the Grampians. The skies are grey and moody, while the soft focus of the scenes creates a feeling of peaceful meditation. There is quietness on this road trip, with time to contemplate the passing landscapes.

The Age, Arts Section