

KARLEE RAWKINS

HONEY GULLY

6 - 24 August 2013

'This exhibition continues on a theme I have been following in my work with each series being placed or created as an imagined location. Places such as an orchard, the forest, the garden and a meadow. This show is 'Honey Gully'. My intention is to document a psychological space rather than an actual place, playing with metaphor and symbolism to create self-referential pieces.

The title 'Honey Gully' is borrowed from a locality spotted on a road trip that followed the beautiful Macleay River between Armidale and Kempsey. This series of work has been greatly inspired by the colours and textures of several recent drives, and a curiosity in the concept of journey that these trips sparked. I like the idea of art as a medium to capture a moment in time, painting to document a creative process.

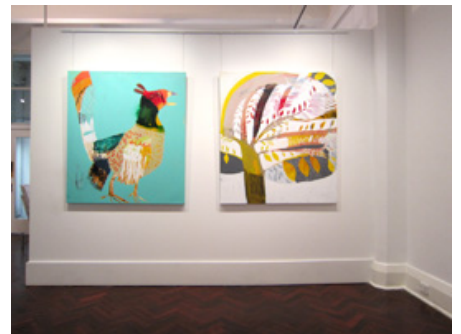
The composition of my works are dominated by pattern with a focus on surface and mark-making. Pattern has held my interest for some time; the camouflage and decoration in plumage and foliage, the nostalgia of domestic and vintage design, the use of over-whelming pattern in both outsider and psychotic art and also religious imagery. Pattern is used to create ambiguity and even obscurity in my compositions. The paintings reveal the brushstrokes and scribbling of each layer, giving a sense of movement, change and complexity.

My research is a fluid and intuitive process, driven by the on-going development of a personal mythology. The specific birds and trees of Honey Gully were inspired by medieval woodblocks and the vintage bird books in my studio collection. My references are often poetic associations, inspired from life experience and research findings. I aim to create totem-like motifs that explore our relationship to nature, archetypes and spirituality. Traditionally the mythology of winged creatures lends itself to a spiritual sense of ourselves, suggesting we are a part of a greater scheme or awareness. Honey Gully is a collection of birds and their tree homes. A sweet and sticky place, a particular point in my life as a woman and a mother.'

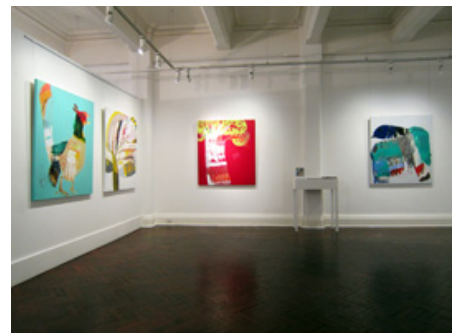
Karlee Rawkins 2013



Honey Gully installation views



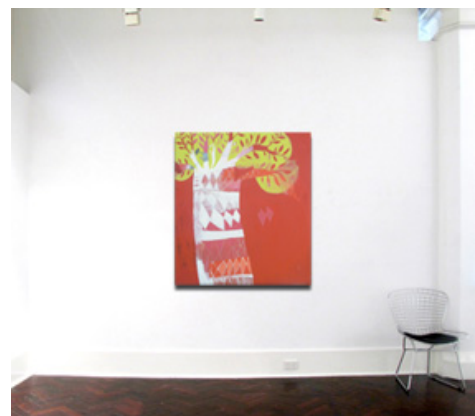
Honey Gully installation views



Buffer Creek Pigeon 2013
 acrylic & charcoal on canvas
 137 x 121 cm



Cherrybrook 2013
 acrylic & charcoal on canvas
 137 x 121 cm



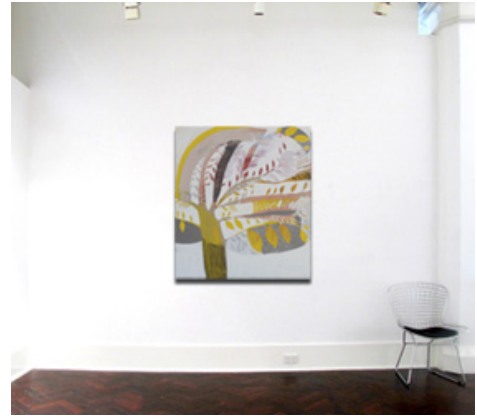
Artwork in-situ on 3.7m wall



Bush Lemon 2013
acrylic & charcoal on canvas
137 x 121 cm



Tom Cat Creek Pheasant 2013
acrylic & charcoal on canvas
137 x 121 cm



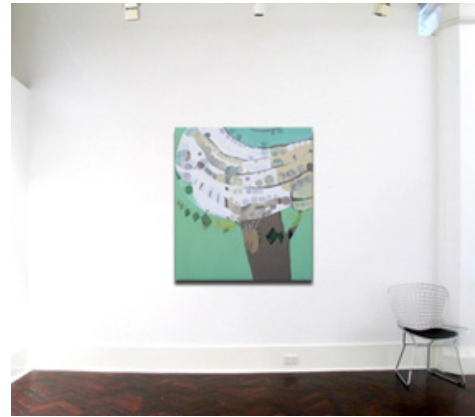
Artwork in-situ on 3.7m wall



Weed Ceremony 2013
acrylic & charcoal on canvas
137 x 121 cm



Under the Witches Tree 2013
acrylic & charcoal on canvas
137 x 121 cm



Artwork in-situ on 3.7m wall



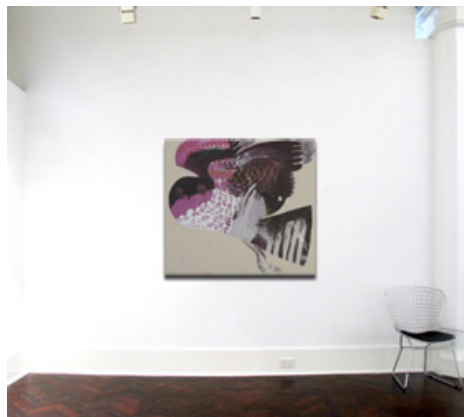
Twins 2013
acrylic & charcoal on canvas
121 x 137 cm



Artwork in-situ on 3.7m wall



Hawk Day 2013
acrylic & charcoal on canvas
121 x 137 cm



Artwork in-situ on 3.7m wall



Mummy 2013
acrylic & charcoal on canvas
213 x 167cm



Artwork in-situ on 3.7m wall