

MAMI YAMANAKA

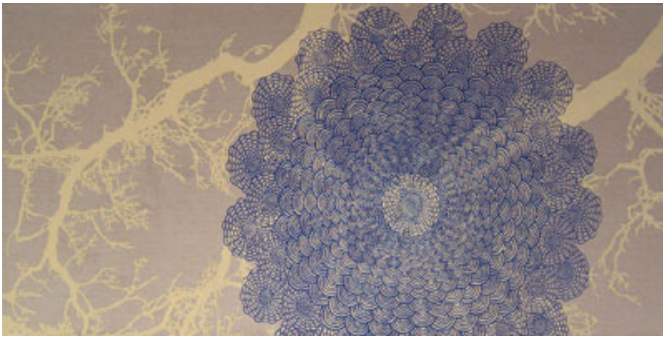
SILENT YESTERDAY

17 April - 5 May 2012

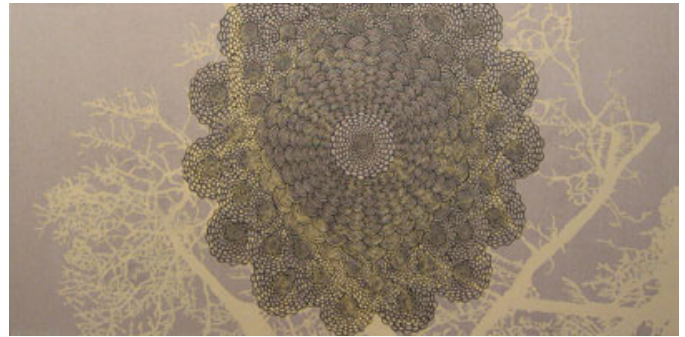
Japanese born and Melbourne based, artist Mami Yamanaka deals with pattern with the same sensitivity for which traditional Japanese design is best known. Drawing in circular motions and incorporating forms that symbolise her experience of migration, the intricate forms she produces reflect both the fragility of nature and the abundance of inner experience. This will be Mami's sixth solo exhibition with FLG. Her work is represented within corporate and private collections in Japan, Australia, New Zealand and Hong Kong.

'What happened last year to my country quietly affected my life. After the initial shock, my internal life went back to normal, but subconsciously it created a large shift within my psyche. My work often expresses the simultaneous unfamiliarity and intimacy that I feel with the Australian environment where I now live, always unconsciously compared to the Japanese environment, which has slowly become fluid fractions of memories and my own personal landscape. Now my personal landscape is slightly but fundamentally altered. When I experience my current environment, I quietly contemplate the nature of Japan, the patterns that this nature creates, and its strength and fragility. My works for this show express my own contemplations - they are meditations towards my own internal landscape and the patterns that I see within.'

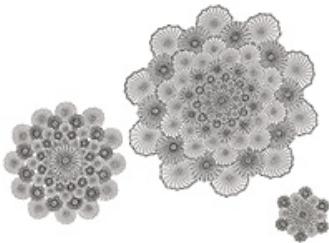
Mami Yamanaka 2012



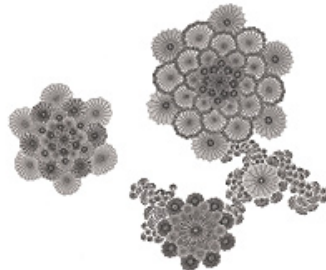
Untitled 1 2012
 oil on linen
 61 x 122cm



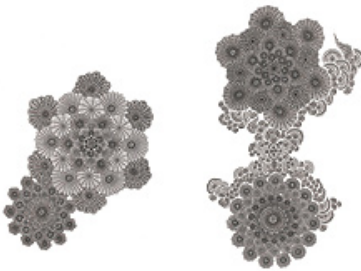
Untitled 2 2012
 oil on linen
 61 x 122cm



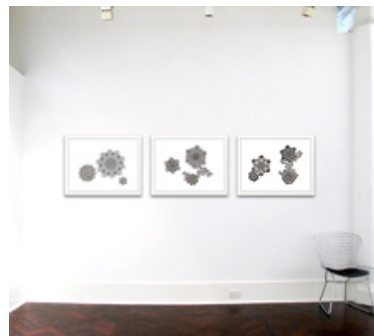
Silent Yesterday 1, 2012
 ink on paper (framed)
 56 x 76cm



Silent Yesterday 2, 2012
 ink on paper (framed)
 56 x 76cm



Silent Yesterday 3, 2012
 ink on paper
 56 x 76cm



Framed estimate artworks in situ
 on 3.7m wall



Untitled 4, 2012
pigment ink on paper, with cutout rag paper
56 x 76cm



Untitled 5, 2012
pigment ink on paper, with cutout rag paper
56 x 76cm



Untitled 6, 2012
pigment ink on paper, with cutout rag paper
56 x 76cm



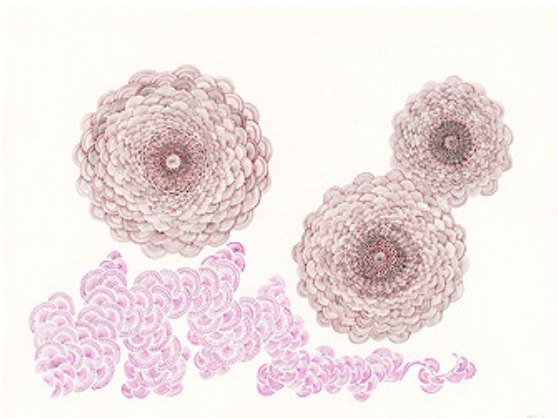
Untitled 7, 2012
pigment ink on paper, with cutout rag paper
56 x 76cm



Untitled 8, 2012
pigment ink on paper, with cutout rag paper
56 x 76cm



Framed estimate artworks in situ
on 3.7m wall



Untitled 1, 2012
gouache on paper(framed)
76 x 105cm



Untitled 2, 2012
gouache on paper(framed)
76 x 105cm



Untitled 3, 2012
gouache on paper(framed)
76 x 105cm



Framed estimate artworks in situ
on 3.7m wall



Butterfly 1
ink on paper
49 x 56cm



Butterfly 2
ink on paper
49 x 56cm